

## Course Description

Focused on bottle feeding strategies, this course provides immediately applicable practical information to help medical, nursing and therapy professionals better identify and treat the factors that impact successful oral feeding of preterm and medically complex term infants. Utilizing a multidisciplinary approach— both in the NICU and after discharge to early intervention through the first six months—the course emphasizes strategies to facilitate infant abilities and develop caregiver feeding skills. Breastfeeding is emphasized as the best feeding method for infants, with some strategies to support breastfeeding as well. The objective is to identify feeding readiness and provide intervention strategies from a framework of normal development. A holistic approach integrating the medical complexity of these infants is emphasized, using the BROSS approach and the SOFFI Method<sup>SM</sup>.

## Course Objectives

By attending this course, the participant will be able to:

- Identify necessary components of infant development that indicate a readiness to begin and sustain oral feeding, including physiologic, motor and state organization.
- Discuss the development of oral-motor skills in preterm infants.
- Describe the interaction between medical and developmental level as they relate to feeding readiness and the progression of normal feeding skill development
- Identify infants who are not following a normal progression in feeding skill development.
- Use principles of normal development and developmentally supportive care to facilitate feeding progression, to include contributions of both the family and the professional team.
- Identify the influence of various medical conditions on oral feeding success.
- Use the BROSS approach to identify the development of oral feeding skills and use the SOFFI method<sup>SM</sup> to guide feeding decisions and to plan supportive intervention strategies.



## Faculty

Dr. Ross is the creator of the SOFFI Method<sup>SM</sup>, a holistic feeding program for caregivers in the NICU. Erin Ross received her Ph.D from the University of Colorado at

Denver and Health Sciences Center in 2007, and her Master's Degree in Speech and Language Pathology in 1988. She completed a two-year Post-Doctoral Fellowship in the Section of Nutrition, Department of Pediatrics, School of Medicine, University of Colorado Denver in 2009. Dr. Ross provides clinical consultation to several NICUs within HealthONE, Denver in addition to providing professional education and research consultation through Feeding FUNDamentals, LLC. She is currently a Clinical Instructor in the Center for Family & Infant Interaction, University of Colorado Denver, and Faculty at the Rocky Mountain University of Health Professions. In addition, Dr. Ross co-teaches the SOS Approach to Feeding (© Kay Toomey), a feeding therapy approach for children transitioning to solid foods, and consults with an outpatient feeding clinic. Dr. Ross' research interests focus on understanding feeding and growth in the medically complex infant, and on identifying and treating feeding problems in infants and children. She brings over 26 years of experience and provides a perspective that crosses over the initial hospitalization through the first 5 years of life.

## Co-Sponsored by:



## SOFFI Method<sup>SM</sup>: Supporting Oral Feeding in Fragile Infants



*Palácio da Lousã - Boutique Hotel,  
Lousã, Portugal*

**October 25-26, 2018**

The SOFFI<sup>SM</sup> Method is an integrated approach to supporting oral feeding in preterm and in medically complex infants, both in the NICU and in the Early Intervention setting. This two-day course provides the practitioner with evidence-based information regarding feeding development as well as assessment and intervention strategies.

"The use of the SOFFI in conjunction with this (NANN) guideline is highly recommended. The SOFFI algorithm is grounding in similar principles as described in this guideline." (p. 7, Sables-Baus, S., et al., "Infant-Directed Oral Feeding for Premature and Critically Ill Hospitalized Infants: Guideline for Practice", 2013.) **National Association of Neonatal Nurses**

## Registration

**\$410 USD (\*EUR 350) Fee. Early** registration is **\$385 USD (\*EUR 325), if registered by September 15, 2018**. Deadline for registration is 2 weeks prior to the course. Late registration on the day of the course may be available on a space-available basis, for a fee of \$440 USD (\*EUR 375). Cancellations will be accepted until 2 weeks prior to the course, minus an administrative fee of \$60 USD. NO REFUNDS after October 10, 2018. \*Fee charged in US, Euro fee is approximate and fluctuates with market.  
☐ I have read and understand your refund policy.  
**Please register via credit card at [www.feedingfundamentals.com](http://www.feedingfundamentals.com).** Please contact us at [info@feedingfundamentals.com](mailto:info@feedingfundamentals.com) with any questions regarding the course or registration, bank transfers. You will receive additional information along with your confirmation of registration, within 2 weeks of registering.

On-Site Host contact for directions and other organizational questions: [joao.dias@arcil.org](mailto:joao.dias@arcil.org)

## What People Are Saying:

"There is such a wealth of information in this course. I learned/re-learned so many new things that this could have been a semester-long graduate class. Erin Ross presents information clearly and concisely and in a relatable manner. She is easily approachable for questions, clarifications and discussions." Emily Tricarico, Speech Pathologist

"I have been to many feeding seminars and by far this was one of the best. I enjoyed the global perspective on feeding and realistic intervention strategies." Maxine Nevers-Reynolds

"Loved this conference. The organization of it was great. Starting with the "why" the first day was so informative. Loved the hands-on practice and practical applications. I'm so glad I chose this conference. Can't wait to implement this practice into my therapy. I will be watching for Homeostasis throughout the session!" Lauren Newhard, Speech Pathologist

## SCHEDULE

### THURSDAY, October 25, 2018

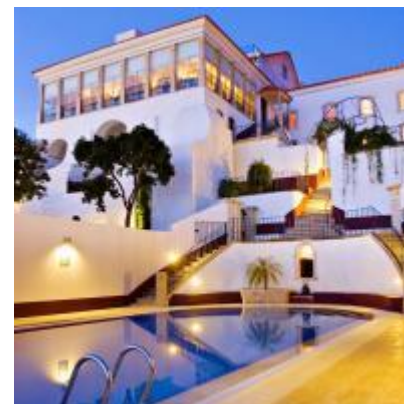
7:00	-	8:00	Registration
8:00	-	8:45	Introduction, Welcome & Family Roles and Expectations for Successful Nurturing and Feeding
8:45	-	9:45	Feeding as a Developmental Process – Physiologic, sensory and state Development
9:45	-	10:00	Break
10:00	-	12:00	Feeding as a Developmental Process – Oral-motor development
12:00	-	1:00	Lunch
1:00	-	1:30	Feeding as a Developmental Process – Across the first year!
1:30	-	3:00	Medical Issues that Impact Feeding Skills: Chronic Lung Disease, Cardiac Defects, Oral-Motor Deficits, Gastro-intestinal Disorders
3:00	-	3:15	Break
3:15	-	3:45	Effects of the NICU Experience: Changing the focus from volume to skill to build a foundation for optimal feeding and growth
3:45	-	4:30	Developmental Steps to Eating: The BROSS approach
4:30	-	5:00	Introduction to the SOFFI Method

### FRIDAY, October 26, 2018

8:00	-	10:00	Using the SOFFI Method to Guide Decisions Regarding Readiness and Interventions for Infants Not Ready to Orally Feed
10:00	-	10:15	Break
10:15	-	12:00	Using the SOFFI Method to Provide Supportive Interventions for Oral Feeding (1)
12:00	-	1:00	Lunch
1:00	-	3:00	Using the SOFFI Method to Provide Supportive Interventions for Oral Feeding (2)
3:00	-	3:15	Break
3:15	-	5:00	Using the SOFFI Method to Provide Supportive Interventions for Oral Feeding (3)

## Location

The course will be held at the Palácio da Lousã - Boutique Hotel, Lousã, Portugal.



The Palácio da Lousã is a 18th-century emblazoned building. Formerly Viscondessa Palace Historical of Public Interest. Transformed into a four star hotel unit, the country's first boutique hotel includes 46 rooms, combining the charm of historic surroundings with maximum comfort to all who visit. Located in the historical center of Vila da Lousã, the gateway par excellence of the Route of the Aldeias do Xisto, the Hotel offers a welcoming atmosphere and breathtaking views of the Lousã Mountain.

## Endorsed by:

